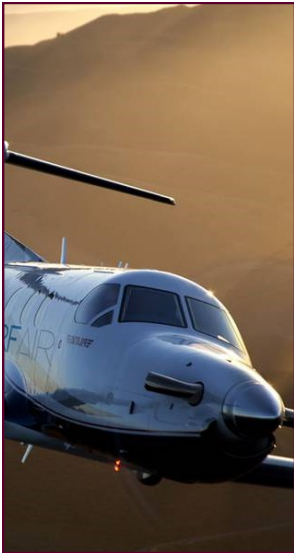




KARABO®

Asset and Maintenance Management Solution for Aviation Applications



KARABO® employs a dynamic, process driven transactional system that enforces best practice workflow which guides aviation users to ensure maximum benefits for aircraft and logistics systems.

KARABO® supports all the maintenance and engineering functions from acquisition to operational application & support and phase-out. We offer the ideal "back-office" computerised solution to enable aviation companies and supporting industry to maximise availability.

Formal training, assisted implementation and product support ensure integration peace of mind.

Application

- Ideally suited for aviation and aviation support companies
 - Fixed wing and helicopter systems.
 - Ground support equipment.
 - Test equipment.
 - Mission and Role equipment.
 - Infrastructure and hangarage.

Aviation Applicability

- Support of SA CAA, JAR compliance.
- Support CAMO compliance.
- Defect / defer e.g. MEL management.
- Personnel competency / certification management.

Advantages

- Has excellent flexibility by allowing user defined codes and terms for easy incorporation with the organisation's current set-up.
- Validates and tracks all user actions via a secured audit trail.
- Allows for total administrative control via table, column and function permissions.
- Is designed for deployment on Server / client networks, the internet & mobile devices.
- Utilise display modules to ensure management by exception.
- Caters for data distribution via synchronisation, replication etc.

SABS
ISO 9001

Contact Details

Tel: +27 63 990-7941
Fax: +86 455 8450
P.O. Box 10319
Centurion, 0046
South Africa
www.optilog.co.za
support@optilog.co.za



For more information, visit us at www.optilog.co.za

Repairable Component Tracking

Warranty Management

KARABO®

Logistics Lead-Time Monitor-

TBO & SLL Management

Engineering Changes

Directive Management

Asset Management & Tracking

- Configuration management.
- Tracking (installation, ownership & location change).
- Status change.
- Part number progression.
- Remaining and safe life limits.
- Warranty management.
- Failure management.
- Maintenance.
- Installation.



Equipment/Component Import / Export

- Shipping documentation.

Real Time Equipment Performance

- Management and asset status displays shows real time asset performance and tracking information.
- MTBF & MTTR.

Warehouse Management

- Issuing / returning of stock.
- Replenishment.
- Stock levels (min/max).
- Batch / shelf life.
- Over / under stock control.
- Slow moving stock.
- Stock taking.



Procurement

- Raising of job and material requests.
- Preparation of orders.
- Placement of orders.
- Receiving of orders.

Work in Process Management

- Scheduled maintenance via predefined events.
- Scheduled and ad-hoc job cards (preventive & corrective maintenance).
- Job card planning and resource allocation.
- Job card and failure feedback.
- Conditioned based maintenance.
- Job card resources (skills, parts, GS&TE, documents).

Configuration Management

- Full configuration breakdown capability.
- Part number evolution management.
- Engineering changes and implementation.
- Configuration structure deviation reports

Documentation Management

- Development of documents at concept or development level.
- Document revision control.
- Document copy control (issuing).
- Document structure control (parent / child & multi level structures).
- Master recorded index control.

Directive Management

- Management of OEM directives and service instructions.
- Incorporation and compliance management.

Support Contract Management

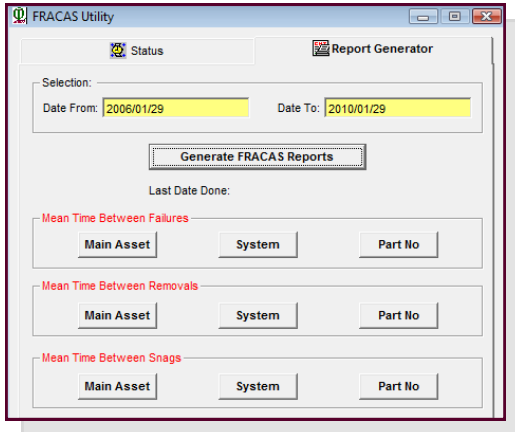
- Out-sourced Maintenance & Services.
- Supply of Material.
- Contract Renewal prompts.



For more information, visit us at www.optilog.co.za

FRACAS

- Failure Recording and Corrective Action System (FRACAS) module, specifically designed for the aviation and supporting industry.
- Export form operational databases, investigating, routing, failure sentencing and closure.

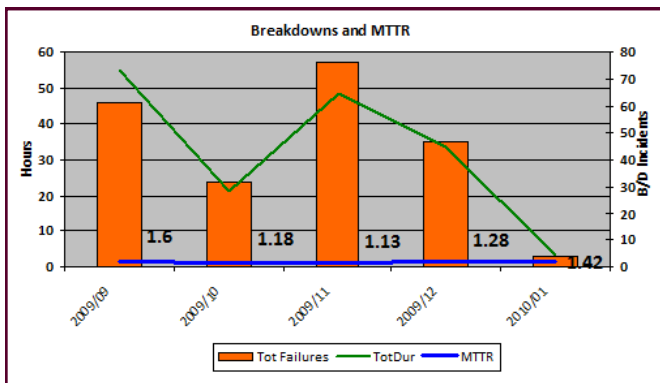


Generic Functions

- Linking and viewing of applicable electronic multimedia.
- Asset structure displays.
- Management status displays.
- Asset base line configuration control.
- Directive management [service bulletins, etc].
- Asset depreciation.
- Organisational structures.
- More than 80 standard reports, exportable views, bar codes and bin strips covering all the modules in the system.

Reporting

- Extensive standard reports.
- COTS reporting add-on (crystal reports).



Mobile Devices

Our application allows total mobility for:

- Asset status changes.
- Failure registration.
- More functions can be added.

The mobile application was written with assistance from a leading mobile application developer and is able to connect directly to the live database for real time update.

The mobile application can be customised to suit the need of the user.



Minimum/Preferred Hardware Requirements

Server Specification:

- Pentium 4, 2 Ghz/Core 2 Due 3 Ghz CPU.
- 4Gb RAM.
- Windows XP/Server 2008 or latest.
- 500Gb hard disk.
- 1024x768/1280x800 screen resolution.
- 100 megabit Ethernet TCP/IP network connection.
- UPS and back-up device and routines ensure smooth operation.

Workstation Specification:

- Pentium 4, 2 Ghz/ Core 2 Due 2 Ghz CPU.
- 2 Gb RAM.
- Windows XP or latest.
- 500Gb hard disk.
- 1024x768/1280x800 screen resolution.
- 100 megabit Ethernet TCP/IP network connection to server.

Bar-Coding and RFID's

- Print bar-code labels.
- Print standardized bin-strips.
- Transfer assets.
- Transfer parts.
- Transfer of documents.