

Product Brochure

Warehouse Management For Specialised Military Assets



Product Overview

Introduction

Operational effectiveness depends on an organisation's ability to deliver excellent results consistently. This boils down to being able to set optimised performance from every asset. Managing such an organisation requires nothing but the best information for tactical and strategic decisions.

First and foremost, our application software is designed to track and manage operational assets to the highest standards. The system translates transactional data into information, and information into the knowledge required for highly effective decision making.

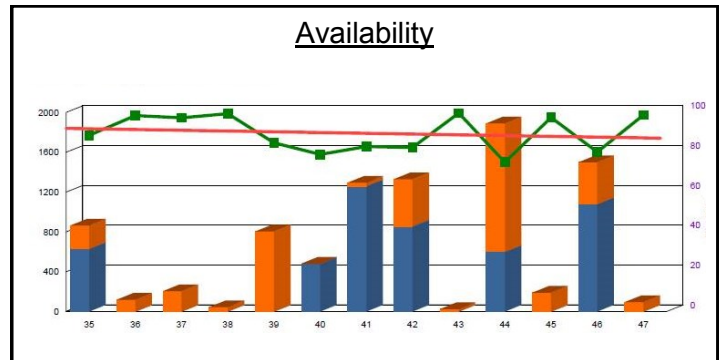
This Brochure

This brochure focus on the warehouse management capability suitable for munition management.



Manage your military assets and stock

- Optimised functionality to support military operations.
- Rugged design to withstand deployments and environments.
- Incorporates newest trends on asset management (ISO 55000).
- Extensive track record in defence environments.



The Correct Information on Readiness is a key enabler towards Operational Capability

Overview

Overview

The Application

- Has great flexibility by allowing user defined codes and Terms for easy incorporation with the organisation's current set-up.
- Validates and tracks all user actions via a secured audit trail.
- Can easily be interfaced with other applications and corporate legacy systems.

Value

Our product is not loaded with superfluous features and we ensure that the solution remains cost-effective and affordable for a wide range of military forces and defence/ISO 9001 and ISO 55 000 companies.

Login and database selection

System access and the level is controlled by using user identification and encrypted passwords.

- Application on-line help
The on-line help function guides the user to realise the full potential of the application.
- Support
Free telephonic support available during office hours, and a full support service is available to customers with a web based call centre.



User Interface

An easy-to-use Graphical User Interface (GUI) with multi-language capability promotes rapid implementation.

- Keyboard, and scanner is based on MS Office applications:
 - Lookup, filter, find, sort and other data selections.
 - Navigate functions.
 - Process functions with prompts guide the user through out the application to perform best industry practices.
 - Auto population of certain fields and user defaults greatly enhances effectiveness.

The use of "electronic signatures" for approval and stock adjustment ensures control of expenditure and data integrity.

Base or Corporate Reference Data

User-defined base or corporate information is structured in such a manner that it leads the User in populating only those files that are actually required. Registration processes allow for setting base information - these default values save time.

Reporting

Various standard reports are available that include graphs and trends. Reports can be customised/added according to customer requirement. Users can also deploy their own reporting applications.



Warehouse Management

Warehouse Management

Warehouse material management includes the following:

- Assets and consumables.
- Stock control.
- Bar-coding.
- Issuing/returning of stock.
- Replenishment.
- Stock levels (min/max).
- Batch/shelf life.
- Over/under stock control.
- Slow moving stock.
- Stock taking.

Procurement and Shipping

The procurement capability includes the following in terms of purchasing orders, repair orders and services contracted:

- Order requisitions.
- Order requisition approval.
- Order registration.
- Order placement.
- Order line cancellation.
- Goods receiving (non-serialised / batch control and serialised items).
- Shipping and permits.



Provision for Munition Management

The solution is ideally suited for munition management and caters for the following:

- Security levels for different levels of management with additional passwords that serves as electronic signature.
- Management of ammunition lots and rain numbers.
- Provision for Nominal Explosive Content (NEC) to calculate total explosives per warehouse.
- Linking of manuals, images and video content.
- Requisition authorisation before issue of munition.
- Minimum and maximum levels.
- Management of strategic/war stock levels.
- Processes supports handheld and batch scanners.
- Allowance for maintenance of munition using the events function.
- Provision for job cards on scheduled inspection and corrective tasks.
- Condition monitoring to monitor humidity and temperature for controlled environments.
- System customisation.
- Tailored implementation on request.
- Scalable solutions.

Store Requisition Approval Process

Store Requisition No: STR-00001

Point of Delivery Location: M-DEPOT

Section: MUN-DEPOT

Cost Centre: PROVISION

Required for Person:

Required for Jobcard:

Required for Asset:

Required for HBS:

Approved By: OL01

Password:

Line No	Process Flow	Act Warr	Required Qty	Approved Qty	UOM	Unit Price
---------	--------------	----------	--------------	--------------	-----	------------

Other Functionality

Asset Management

Asset management includes the following:

Asset Register

The asset register allows management of the following:

- Asset structure.
- Asset tracking.
- Asset deployment.
- Asset ownership with linked images.
- Asset warranties.
- Asset ageing meters (calendar & utilisation).
- Age and remaining life monitoring.
- Accident / incident history.
- Asset status history.
- Asset failures & reviews.

Asset Configuration Management

- Part number configuration – establish configuration base lines.
- Asset configuration – manage physical asset structures by the established part number configuration baselines.

Material Management

- Assets and consumables.
- Stock control.
- Bar-coding.
- Issuing/returning of stock.
- Replenishment.
- Stock levels (min/max).
- Batch/shelf life.
- Over/under stock control.
- Slow moving stock.
- Stock taking.

Maintenance Management

- Works order management.
- Task cards.
- Job cards.
- Scheduled events (preventative maintenance).
- Ad-Hoc events (standard repair tasks).
- Condition based maintenance.
- Work-in-progress (WIP) and reg-boards.

Organisation and Personnel

- Structuring of the organisational and personnel environment ie competency and licences.

Depreciation

Asset depreciation process

- Straight line.
- Reduced balance.
- Production.

Logistics Support

Logistics support module encompasses the following:

Document Management

The document manager caters for documentation (and software) management. This covers:

- Document development.
- Document distribution tracking.
- Document types or groupings.
- Document classification.
- Document status.
- Revision and copy control.
- Associated documentation links.
- Date registered and expiry dates (software licences etc).
- Images and file links in various formats.
- Document copy management.
- Concept document electronic routing.
- Document structures (multi-parent / child relationships, parts, chapters, pages, and appendices etc.)
- Documents and images can be widely linked within the system.
- Master record indexes.

Documents can also be routed using process windows or bar code and scanning functions.

Contract Management

The contract manager allows users to monitor and manage support contracts and service agreements:

- Contract and contractor details.
- Assets per support contract.
- Contract renewal rates and costs.
- Job history per contract.
- Contract services.
- Contract suppliers.

Procurement and Shipping

The procurement capability includes the following in terms of purchasing orders, repair orders and services contracted:

- Order requisitions.
- Order requisition approval.
- Order registration.
- Order placement.
- Order line cancellation.
- Goods receiving (non-serialised / batch control and serialised items).
- Shipping and permits.

IT and Technology add-on options

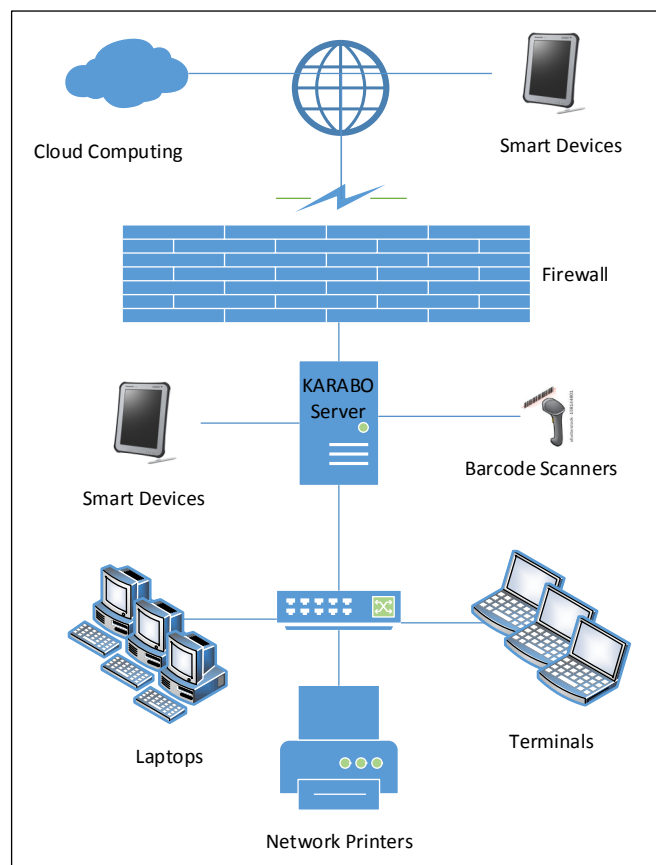
IT and Related Interfaces

Architecture

The modular architecture provides a world-class transactional system. It caters for the management of assets, materials, work orders, warranties, feedback and much, much more. All this information can be seen and managed by means of detailed status displays and reports, all highly relevant to their required purpose.

Technology

We use state-of-the-art technology to achieve ease of use by the user. Remote access can be obtained by the use of standard internet browsers, tablet, RFID and bar-coding interfaces. Standard— as well as customised features allow you to have information at your finger-tips, leaving valuable time available for your core business. Data synchronisation between remote sites ensures accuracy.



Barcode and Scanner Interface

Barcode or RFID technology is an optional feature, using barcode labels and scanners for processes. Keyboard wedge-type barcode scanners as well as batch scanners can be used and most barcode types can be read.

Barcodes are produced in Code BAR128 format limited to unaccented latin characters ([a-z] [A-Z] [0-9]). Cyrillic characters are translated to latin characters for barcode output and re-translated back to cyrillic when read.

Barcode labels can be printed for:

- Assets.
- Stock items and bin inventory.
- Batches.
- Consumables and batches.
- Documents.
- Personnel.
- Job cards and task cards.
- Condition monitoring routes.

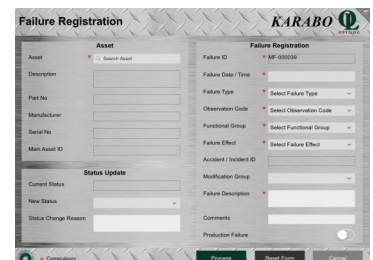
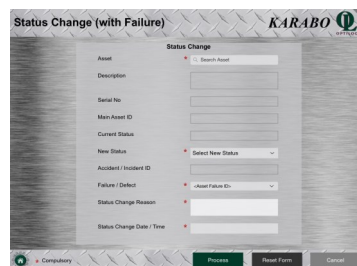
Mobile Devices

Our application allows total mobility for:

- Asset status changes.
- Failure registration.
- More functions can be added.

The mobile application was written with assistance from a leading mobile application developer and is able to connect directly to the live database for real time update.

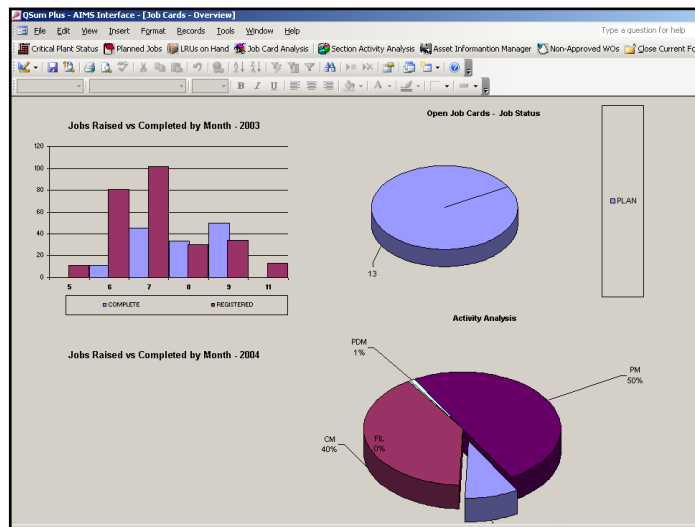
The mobile application can be customised to suit the need of the user.



Administration and Remote Deployments

Client Specific User Interfaces

Client specific user interfaces can be easily developed providing the organisation the choice to custom screens providing decision-making information.



System Administration

Client System Administration Functions

Different user environments and roles can be set-up by the customer allowing:

- Custom menu access and set-up.
- Data field options to:
 - View data only.
 - Edit, create and save, or.
 - No visibility or access to sensitive fields.
- User specific configuration set-up.
- Client specific defaults.

Data Import and Export Functions

Data can be imported and exported using the Import and export functions and menu detail can be saved in various formats e.g. tab delimited, MS Excel etc.

Multimedia File Attachments

A full range of multimedia formats is supported. Word files, spreadsheets, graphic images, automated test results, CAD diagrams, electronic IPCs, or audio and video clips can be linked to:

- Documents.
- Assets.
- Parts in the part base.
- Events.
- Job cards.
- Personnel.
- Permits and related documents.

Data Synchronisation

Data synchronisation between remote sites is supported using Sybase Mobilink database synchronisation technology. Communications protocol uses ODBC or HTTP over TCP/IP networking. VPN between sites may be employed as well as SSL encryption, if using HTTP over the Internet.



System Requirements

Operating Systems and Databases

The following operating systems are supported:

- Windows XP or NT.

The following databases are supported:

- Sybase Adaptive Server SQL anywhere version 9 or later.
- MS SQL Server 2000 and 20028.
- Oracle DBMS – Conversion can be done on request.

Minimum Hardware Requirements

Server Specification:

- Pentium 4, 2 Ghz/Core 2 Due 3 Ghz CPU.
- 4Gb RAM.
- Windows XP/Server 2008 or latest.
- 500Gb hard disk.
- 1024x768/1280x800 screen resolution.
- 100 megabit Ethernet TCP/IP network connection.
- UPS and back-up device and routines ensure smooth operation.

Workstation Specification:

- Pentium 4, 2 Ghz/ Core 2 Due 2 Ghz CPU.
- 2 Gb RAM.
- Windows XP or latest.
- 500Gb hard disk.
- 1024x768/1280x800 screen resolution.
- 100 megabit Ethernet TCP/IP network connection to server.

Support and Training

General

Technical Support

Technical support is available 24/7 via the web or by telephone or email during working hours.

Functional Implementation Assistance

Functional implementation support is available to clients requiring a "Quick-Start" solution and is quoted separately.

Training

We offer standard training courses at our offices and can also present training at the client's premises.

Special Client Specific Training

We also offer specialised training courses that are developed based on the client environment. These are developed in conjunction with the client and normally includes enablement based on mutual and contractual agreement.

